

THE MULTI JACKETS

BY TONY

Shipping (office use only)

Date out _____

Type of Shipping _____

Male Female

Height _____

Weight _____

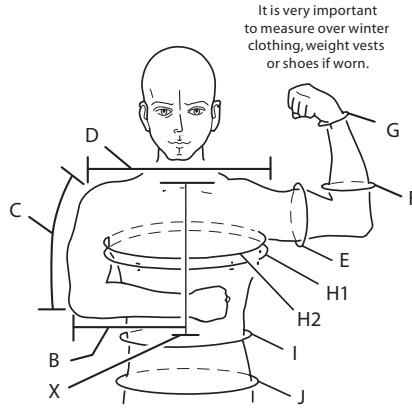
D shoulder tip to shoulder tip

C shoulder tip to elbow

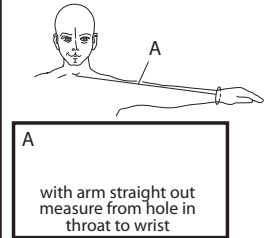
B elbow to wrist

X hole in throat to waist

neck



It is very important to measure over winter clothing, weight vests or shoes if worn.



Q1 ARMPIT TO TOP OF LATERAL BAND

Q1 _____

Measure from armpit to top of lateral band.

Q2 MIDRIFF

Measure from outside of both lift webs over belly button.

Q2 _____

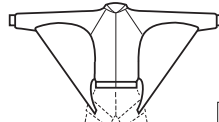
(These measurements must be taken wearing your rig.)

\$155.00



Big Way Top

\$195.00



C Wing Jacket

NOTE: The C Wing Jacket has optional R.S.L. releases that fit on your leg straps.

R.S.L. Releases \$30

Extra Rings \$5

Front Slick Nylon Supplex 4 - Ply Print \$10

Back Supplex 4 - Ply Print \$10

Arm Supplex 4 - Ply Print \$10

Wing Color Front Slick Nylon Print \$10

Wing Color Back Supplex Print \$10

(Write in Stripe colors)

\$10 \$10 \$10

Binding Tape Color on Wing (Leading Edge)

2 Belly Cargo Pockets \$30.00

Sit Wing on back of arm \$35

Wing Color (Zero P)

Binding Tape Color on Wing (Leading Edge)

\$195.00



Dual Wing Top

Front Supplex 4 - Ply Print \$10

Back Supplex 4 - Ply Print \$10

Arms Supplex 4 - Ply Print \$10

Wing Color (Zero P)

Binding Tape Color on Wing (Leading Edge)

Sit Fly Wing

Freestyle & Sky Surfing Wing

\$145.00



Free Fly Top

Front Supplex 4 - Ply Print \$10

Back Supplex 4 - Ply Print \$10

Arms Supplex 4 - Ply Print \$10

GRIPS _____

\$20

BINDING TAPE _____

RUSH SERVICE \$40

2 - 4 WEEKS

DEPENDS ON SEASON

Suit prices are subject to change without notice

SHIPPING AND PAYMENT INFORMATION

Name: _____

Dealer: **Skydive Store Inc.**

E-Mail Address: _____

Ship To: _____

Phone: _____

Fax #: _____

Check or Money Order Payable To Tony Suits, Inc

M/C VISA DISCOVER AMERICAN EXPRESS

#: _____

Exp. Date /

Card Holders Signature _____

Jacket \$ _____

Extras \$ _____

Sub-total \$ _____

FL. Only 7% \$ _____

RUSH \$ _____

Handling \$ 2.00

Shipping \$ _____

TOTAL \$ _____

Revision date: MAY 2006

We are not responsible for any duties or import taxes that may be incurred when shipped overseas.

FOR SHIPPING RATES: SEE WEB SITE

SHIPPING OUTSIDE OF USA: PLEASE CALL FOR RATES

Skydive Store Inc Phone - 570-588-7576 - Fax - 570-588-5650



TONY SUIT

MULTI JACKET

C Wing

The "C" Wing passes around the leg strap and re-attaches back upon itself. Swoop cords tighten the wing. The standard wing comes with a Fastec clip that has a loop attached. You feed your leg strap through the loop. This is a more secure anchor point as it can not move. Brass R.S.L. releases are available for \$30 extra.

Dual Wing Top

The trend is that Sky Surfers and Free Stylists are using a small wing for maneuverability. For early Sit Flying some schools use the Sit Wings to become familiar with the sit flying position. We also offer the baggie Free Fly jacket. As the Sit Fly student progresses with the jacket they can then jump just the legs to learn head down, and can then combine the two for Free Flying.

 We can supply you with an extra ring and tape for you to sew to your harness

THE MULTI JACKET COLOR LIST

BINDING TAPE COLORS (around wings and grips)

White	Black	Rust	Peacock
Navy	Kelly Green	Forest Green	Pink
Royal Blue	Purple (LT)	Beige	Flo Yellow
Denim	Grey	Brown	Smoke
Silver	Maroon	Gold	Magenta
Blue	Red	Yellow	Purple
Light Powder Blue	Pale Pink	Flo Green	Emerald
Dark Powder Blue	Orange	Flo Orange	

NYLON

Royal Blue	Red
Pale Blue	Kelly Green
Navy	Gold
White	Purple
Silver	Turquoise
Black	Hot Purple
Maroon	Peacock

SPANDEX

Gold	Orange
Black	Burgandy
Purple	Light Blue
Silver	
Red	
White	
Navy	
Royal	

SUIT COLORS

SUPPLEX (Light) any and all weights		
Royal Blue	Magenta	Orange
Black	White	Hot Purple
Navy	Red	Forest Green
Silver	Purple	B&W
Pink	Maroon	Checkerboard
Turquoise	Yellow	
Charcoal		

4-PLY

Creme	Navy	Lime
Orange	Maroon	Pink
Charcoal	Royal Blue	Flo Pink
Black	Steel	Flo Green
Forest Green	Silver	
Red	White	
Powder Blue		
Purple		
Turquoise		

OFFICE ONLY

Draw	Date		
Cut	Date		
Start	Date		
O/L	Date		
Finish	Date		
Ck1	Ck2	Ck3	Ck4

NOTE: We reserve the right to discontinue colors that are not up to our standard, as dye lots vary. We can't guarantee the color, fading, or bleeding.