

Shipping
(office use only)

Date out _____

Type of Shipping _____

Male Female

Height _____

Weight _____

SUIT MATERIAL
Fabric Code

Supplex (lightweight) **"S"**

4 Ply (mid-light weight) **"4P"**

D shoulder tip to shoulder tip

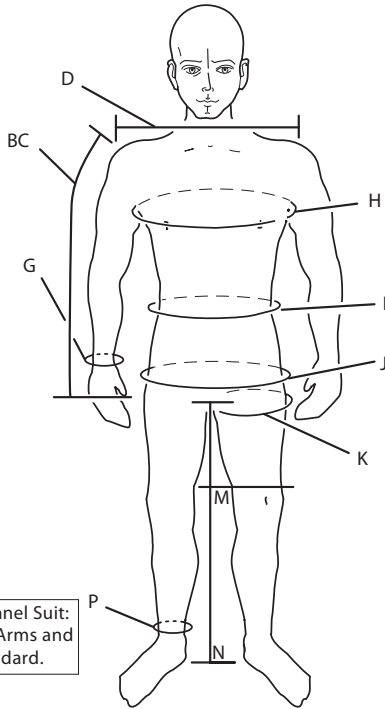
BC shoulder tip to thumb tip

G wrist

P ankle

M crotch to top of knee

N crotch to floor



H chest

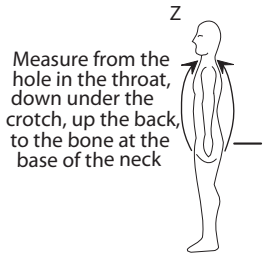
I waist

J hips and buttocks (at widest point)

K thigh

Z

All drag areas will be adjusted according to height and weight unless otherwise specified.



Wind Tunnel Suit: CORDURA Arms and Legs standard. \$295

EXTRAS (write in color choices)

Flat Leg Grips \$20 _____

Flat Arm Grips \$20 _____

Binding Tape _____

Reinforced Arms & Legs \$20 _____

Cordura Knee Pads \$8 _____

Cordura Butt Pad \$10 _____

Prints \$2.50 each panel _____

High Collar \$15 _____

Z Stripes \$100 _____ (write in colors)

3/8 Tape Color _____ (write in color)

Stars \$100 _____

2 Stripes \$50 _____

4 Stripes \$100 _____

2 Parallel Stripes \$50 _____

RUSH SERVICE \$40 2 - 4 WEEKS

DEPENDS ON SEASON

Suit prices are subject to change without notice

3/4" binding tape

2" fabric tape

These designs on legs only, half price

Windtunnel options:

ZP option \$40

Torso lined with mesh, legs and arms lined with:

Supplex 4 Ply Polycotton

Write in your color choices and fabric code

Freely Suit - VELCRO® leg and wrist cuffs standard

Wind Tunnel Suit - Spandex leg and wrist cuffs w/ stirrups standard

PRICE \$275

Freely Suit Only (checkerboard design) \$50 less if one color only

Suit \$ _____

Extras \$ _____

Sub-total \$ _____

FL. Only 7% \$ _____

RUSH \$ _____

Handling..... \$ 2.00

Shipping \$ _____

TOTAL \$ _____



SHIPPING AND PAYMENT INFORMATION

Name: _____

Dealer: **Skydive Store Inc.**

E-Mail Address: _____

Ship To: _____

Phone: _____

Fax #: _____

Check or Money Order Payable To Tony Suits, Inc

M/C VISA DISCOVER AMEX

#: _____

Exp. Date /

Card Holders Signature

Revision date: MAY 2006

We are not responsible for any duties or import taxes that may be incurred when shipped overseas.

FOR SHIPPING RATES: SEE WEB SITE
SHIPPING OUTSIDE OF USA: PLEASE CALL FOR RATES

Skydive Store Inc Phone - 570-588-7576 - Fax - 570-588-5650

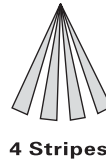
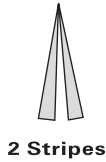
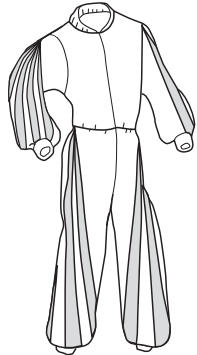
TONY SUIT

COLOR LIST

THE FREE FLY SUIT

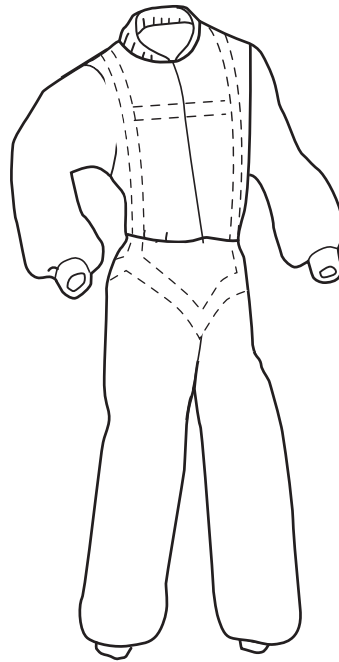
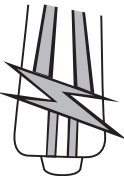
DESIGN YOUR OWN

SOME OPTIONS

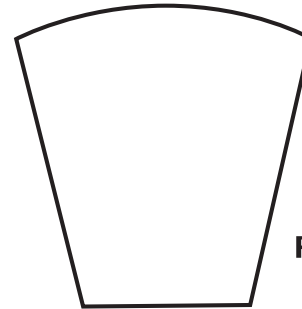


Stars have
6" arm and
15" leg
embroidered
logos in the
centers.

Z-Stripes

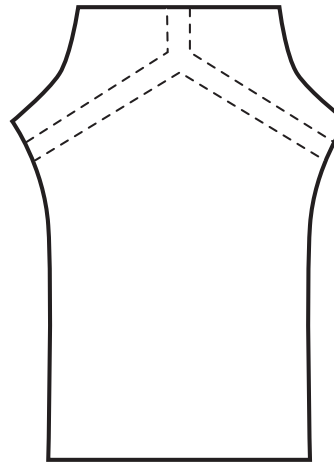


We will contact
you with the price



Arm

→
Front
Right Side



Leg

SUIT COLORS (Always include code letter when writing in color name)

4-PLY

Creme
 Olive
 Khaki
 Pale Blue
 Orange
 Charcoal
 Black
 Forest Green
 Red
 Navy
 Maroon
 Royal Blue
 Steel
 Silver
 White

Lime
 Pink
 Flo Pink
 Flo Green

SUPPLEX (Light) any and all weights

Royal Blue
 Black
 Navy
 Silver
 Pink
 Turquoise
 Charcoal
 Magenta
 White
 Red
 Purple
 Maroon
 Yellow
 Orange
 Hot Purple
 Forest Green
 B&W Checker

BINDING TAPE

White
 Navy
 Royal Blue
 Denim
 Silver
 Blue
 Light Powder Blue
 Dark Powder Blue
 Black
 Kelly Green
 Light Purple
 Gray
 Maroon
 Red
 Pale Pink
 Orange

Rust
 Forest Green
 Beige
 Brown
 Gold
 Yellow
 Flo Green
 Flo Orange
 Peacock
 Pink
 Flo Yellow
 Smoke
 Magenta
 Purple
 Emerald

OFFICE ONLY

Draw		Date	
Cut		Date	
Start		Date	
O/L		Date	
Finish		Date	
Ck1	Ck2	Ck3	Ck4

NOTE: We reserve the right to discontinue colors that are not up to our standard, as dye lots vary. We can't guarantee the color, fading, or bleeding.